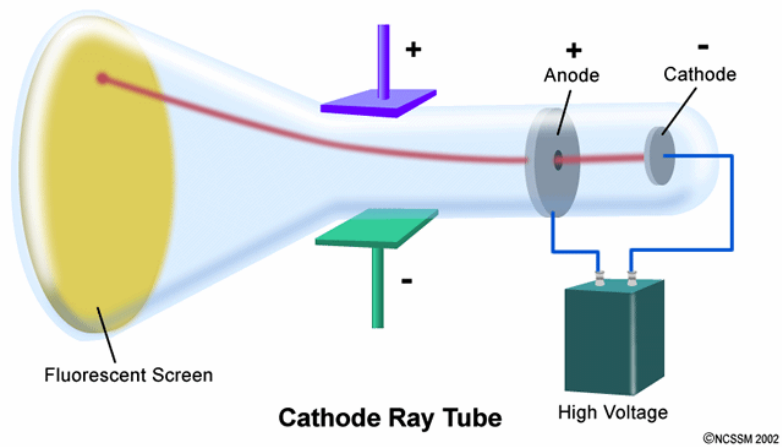
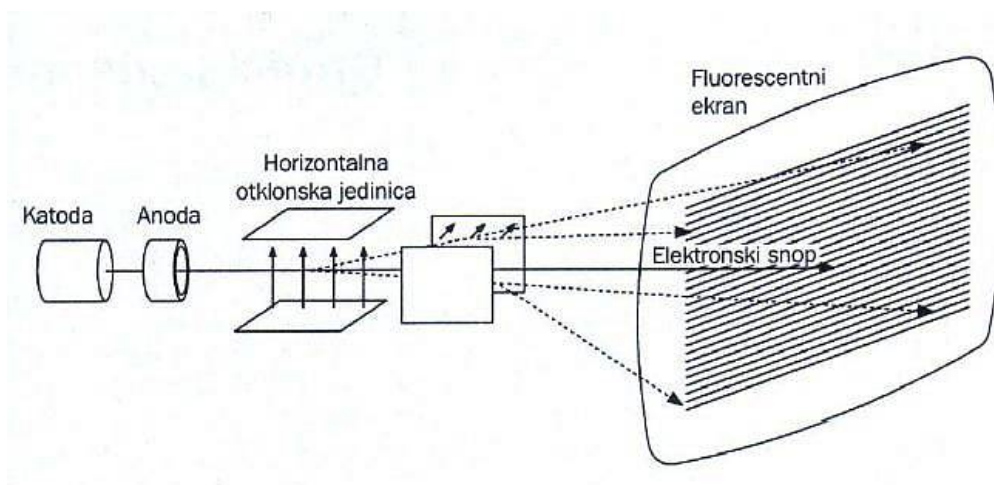


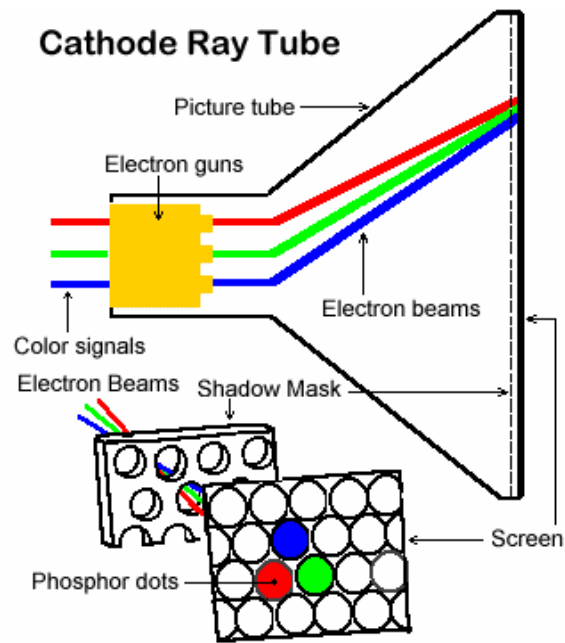
MONITORI

1.CRT monitori



model katodne cevi





| Vrsta displeja | Ugao gledanja | Odnos kontrasta | Brzina odziva | Osvetljaj | Potrošnja el.energije | Životni vek |
|--------------------------|---------------------|-----------------|---------------|-----------|-----------------------|-------------|
| Monitor sa katodnom cevi | više od 190 stepeni | 300:1 | nepoznato | 220 - 270 | 180 W | više godina |

| Nominalna velicina monitora (dijagonala) | Tipicna velicina (dijagonala) | Minimalna rezolucija | Maksimalna rezolucija | Potrebna horizontalna frekvencija |
|--|-------------------------------|----------------------|-----------------------|-----------------------------------|
| 15" | 13,5" - 14" | 640*480 | 1024*768 | 38kHz - 60kHz |
| 17" | 15,5" - 16" | 800*600 | 1280*1024 | 47kHz - 80kHz |
| 19" | 17,5" - 18,1" | 1024*768 | 1280*1024 | 60kHz - 80kHz |
| 20"/21" | 19" - 20" | 1024*768 | 1600*1200 | 60kHz - 80kHz |
| 24" | 21" - 22" | 1600*1200 | 1920*1200 | 80kHz - 95kHz |